



NEXUS-5

/// SHOPS | 2 & 3 BHK FLATS





NEXUS-5

SHOPS | 2 & 3 BHK FLATS

Life is beautiful when your home is too!

Leave behind your old ways of living and experience a new and extraordinary way of life only at Nexus-5. A luxurious residential community that brings together everything that you ever desired in your dream home.

Located in a prime locality of Nadiad, Nexus-5 is much more than just a residence. It is a delightful world which holds the best of everything for you and your family – right from premium homes to assured safety to modern lifestyle to great connectivity to smart retail spaces within the campus. The contemporary architecture and an attractive campus ensure that your homes will also look stylish and feel welcoming.

The convenience of in-campus retail outlets will take care of your everyday needs while offering ready lifetime business to the businesses.





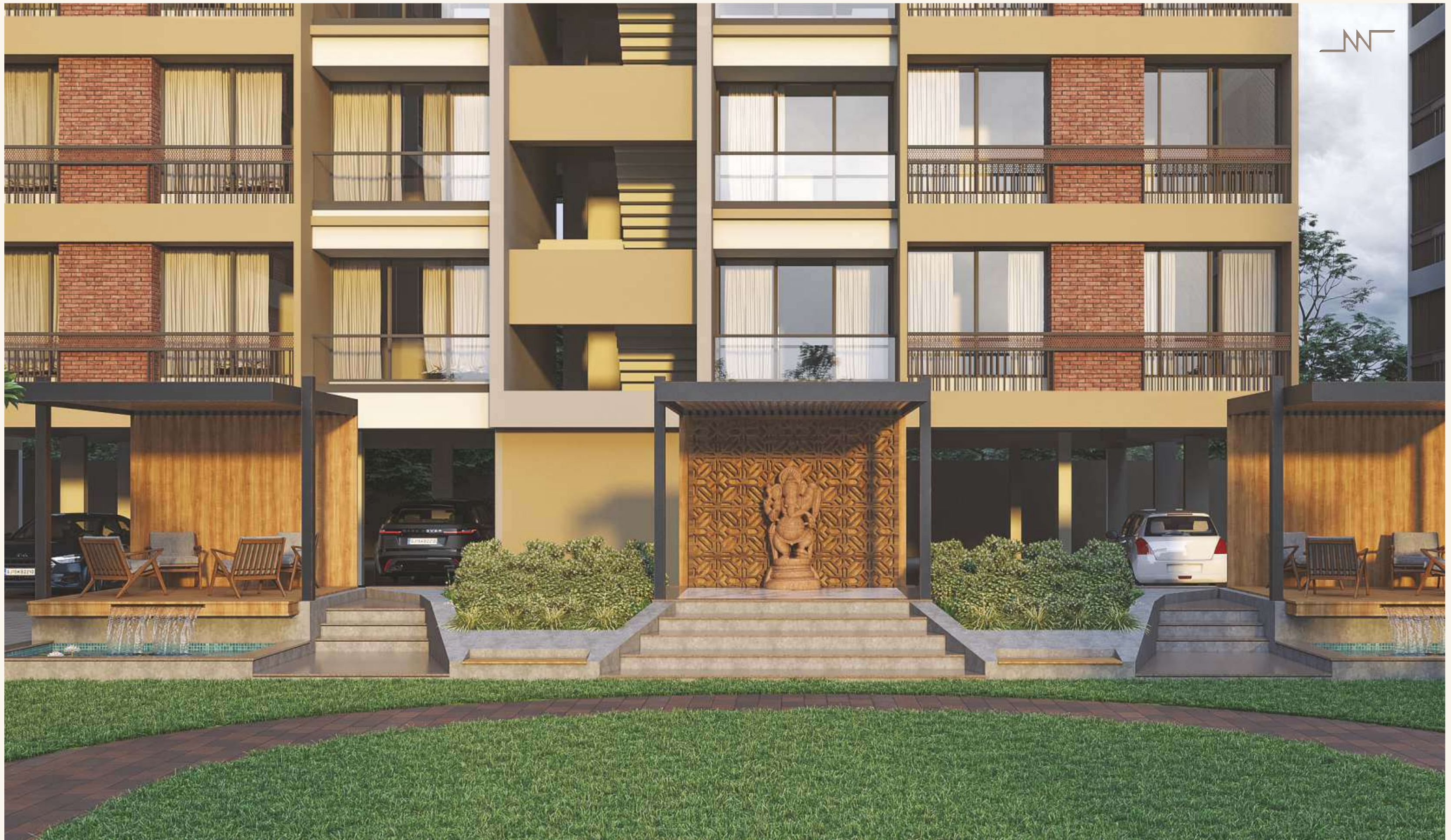
STEP INTO A WORLD OF LUXURY

HOMES THAT CELEBRATE GOOD LIVING

Nexus-5 has been designed to offer a blissful life to its residents. The stunning elevation perfectly complements the plush interiors of our apartments and the lovely landscape of the campus. Our plush apartments with spacious layouts ensure that you can live life to the fullest at all times. The Balconies and large format windows in every home bring in ample natural light and fresh air throughout the year.

The commercial spaces also have many benefits at Nexus-5. Apart from the residential client base, these road-facing units will gain from easy access and regular business from the neighbouring residential projects. Ample ground parking space is an added advantage for the retailers.

Good living does not get better than this.



LEISURE
AMENITIES

SPLASH POOL

INDOOR GAMES
AREA

GAZEBO

GYM &
HEALTH CLUB

CHILDREN'S PLAY AREA
/ SAND PIT

SENIOR CITIZEN'S AREA
WITH SEATING

BOX
CRICKET

PARTY
LAWNS

TEMPLE

LANDSCAPING & PLANTATION
ALL AROUND THE CAMPUS

WALK
WAY







A BLOOMING COMMUNITY.
A WONDERFUL LIFE.

PASTING

A PLACE FOR
JOY-FILLED
EVENINGS
AND LITTLE
ADVENTURES

Life at Nexus-5 is limitless fun and joy. Here is a home that is built to spread joy. Thoughtfully picked leisure amenities across the campus will not only help you distress and relax after a long day but will also make your kids happy. Simply put we have something for everyone to enjoy.



GROUND FLOOR LAYOUT PLAN

PASTING



TYPICAL FLOOR LAYOUT PLAN

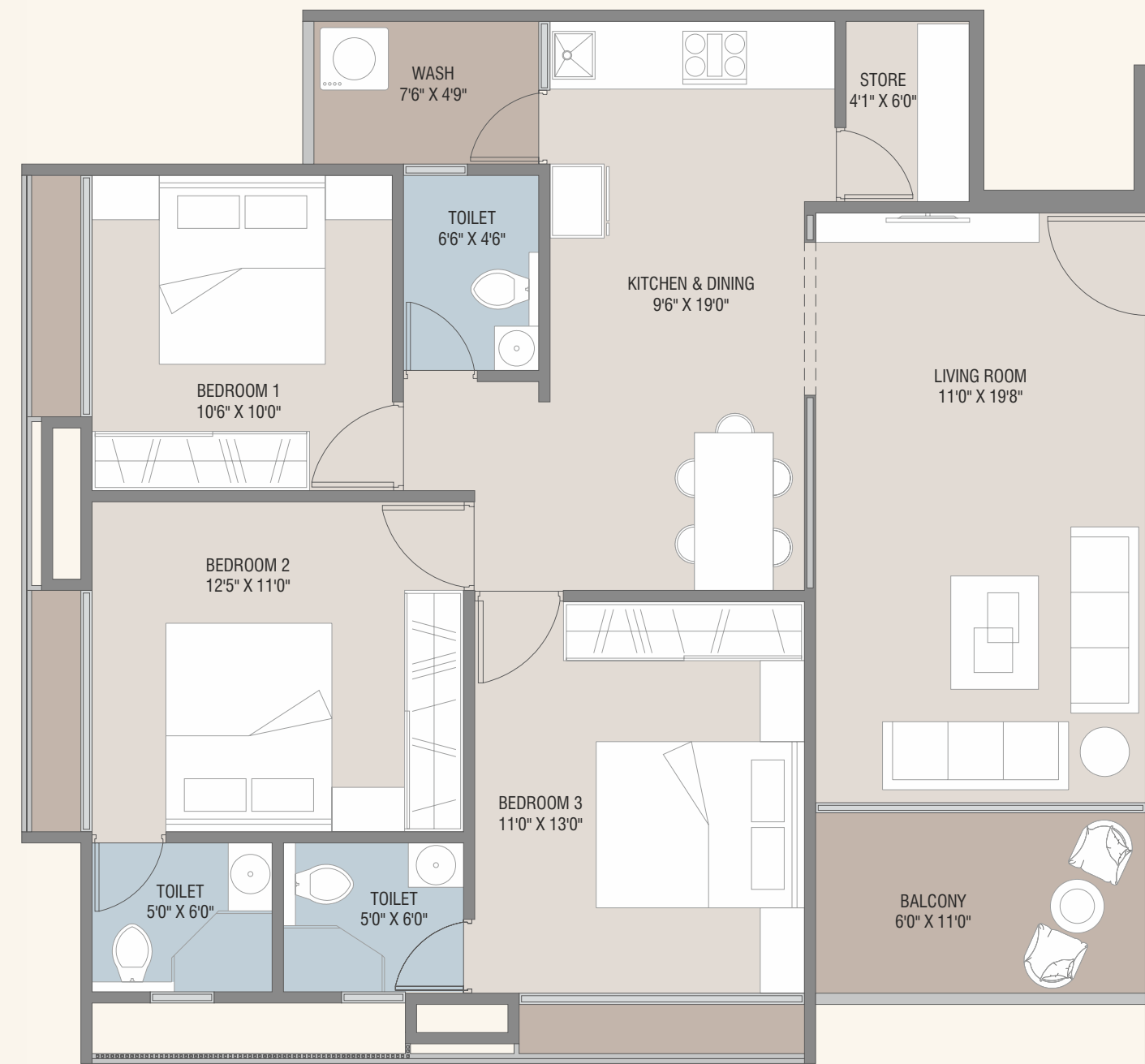
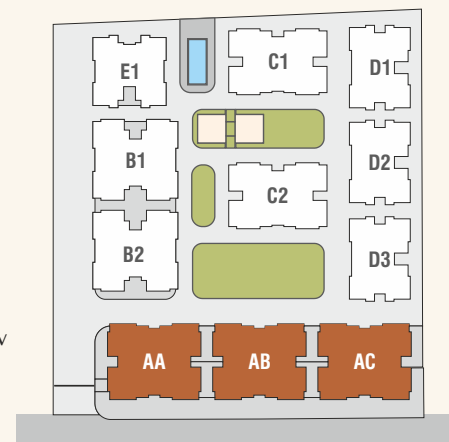


<< TOWARD NADIAD

<< PIJ ROAD >>

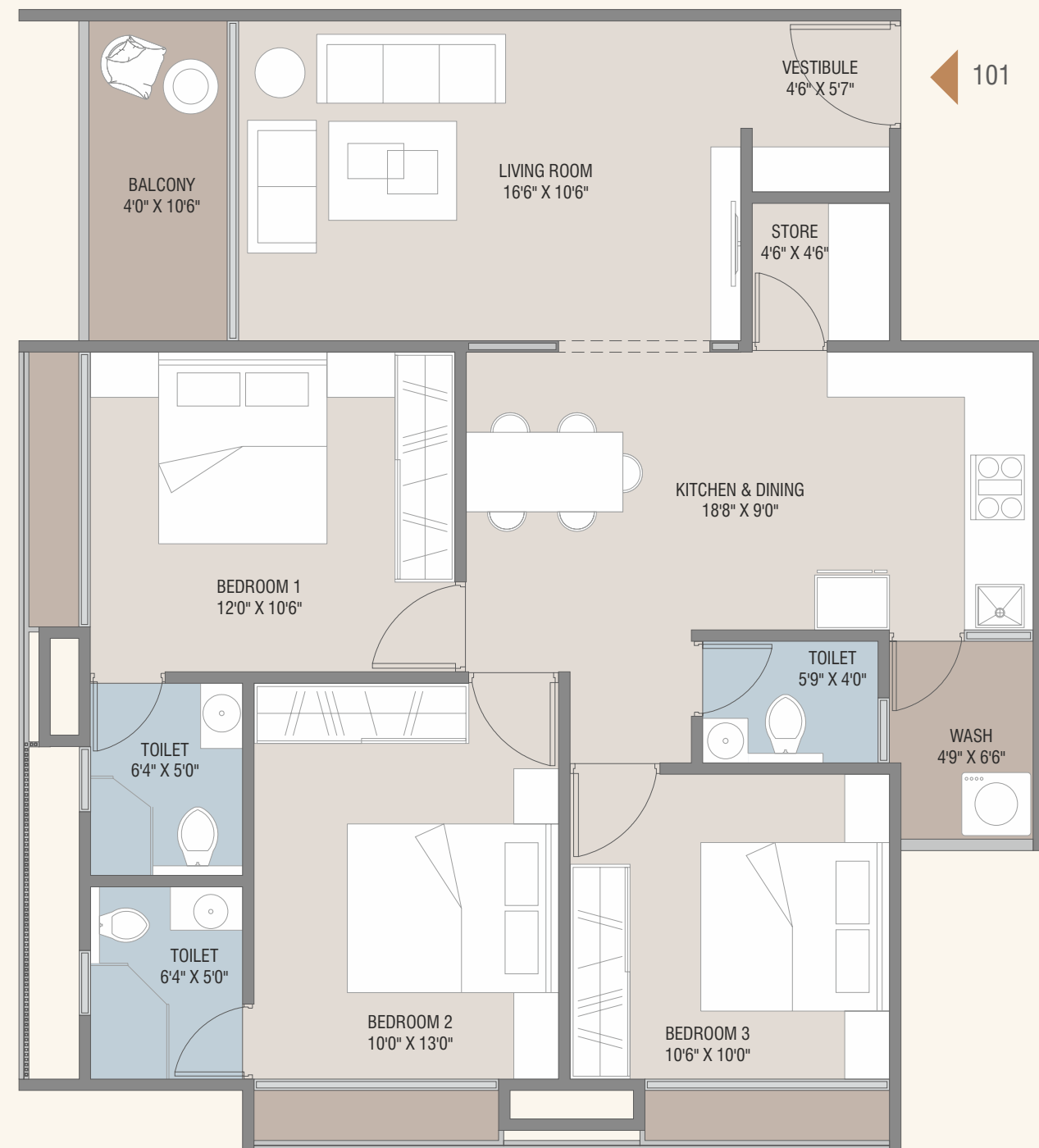
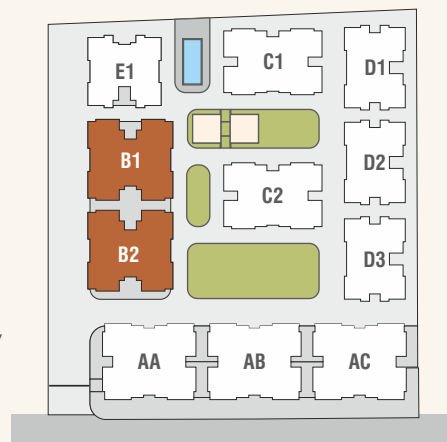
TOWARD PIJ >>

TYPE: AA, AB & AC
3 BHK

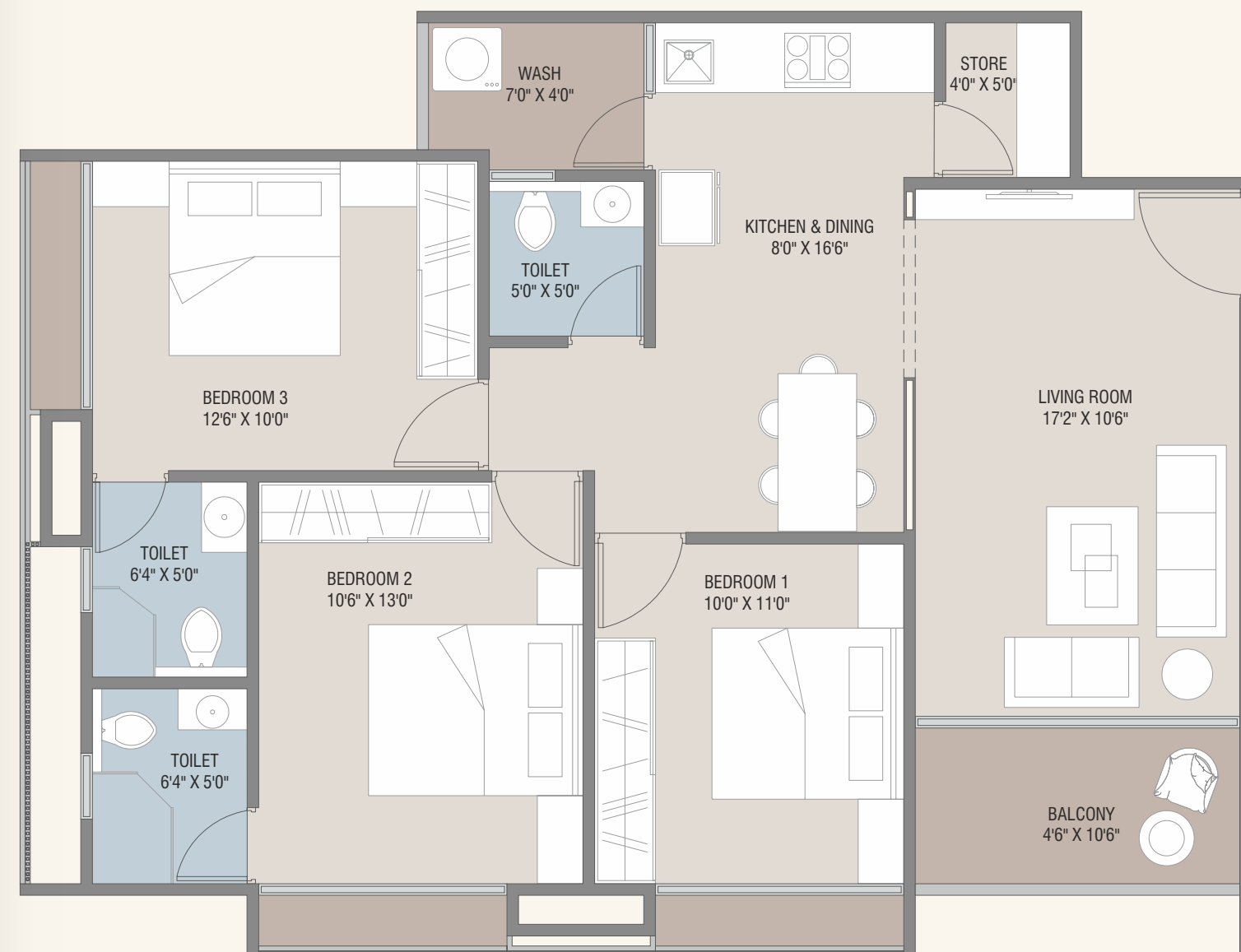
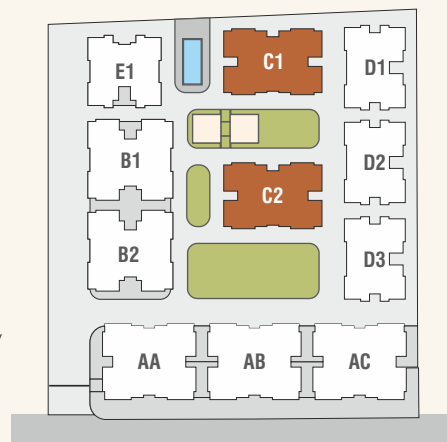


203

TYPE: B1 & B2
3 BHK

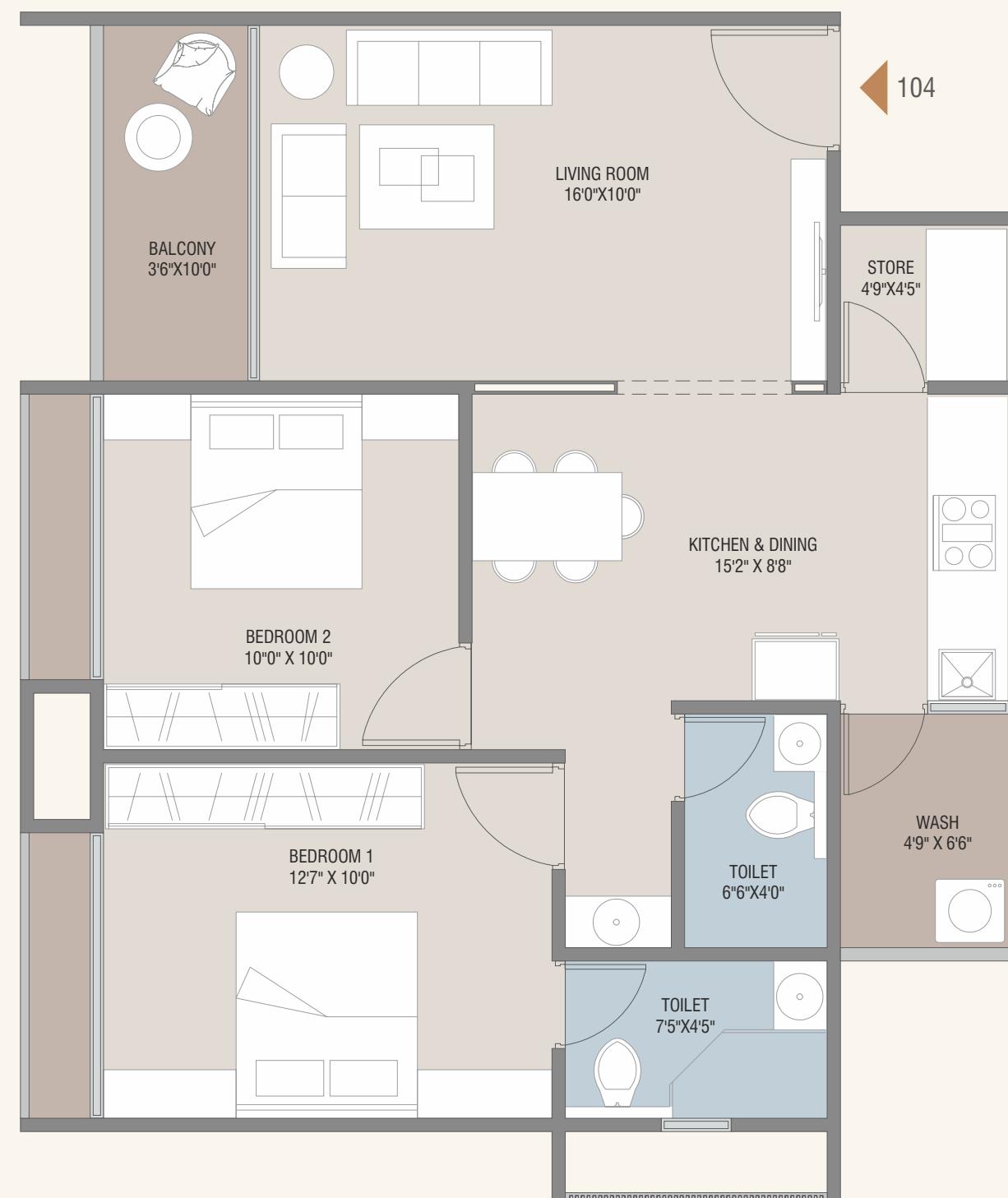
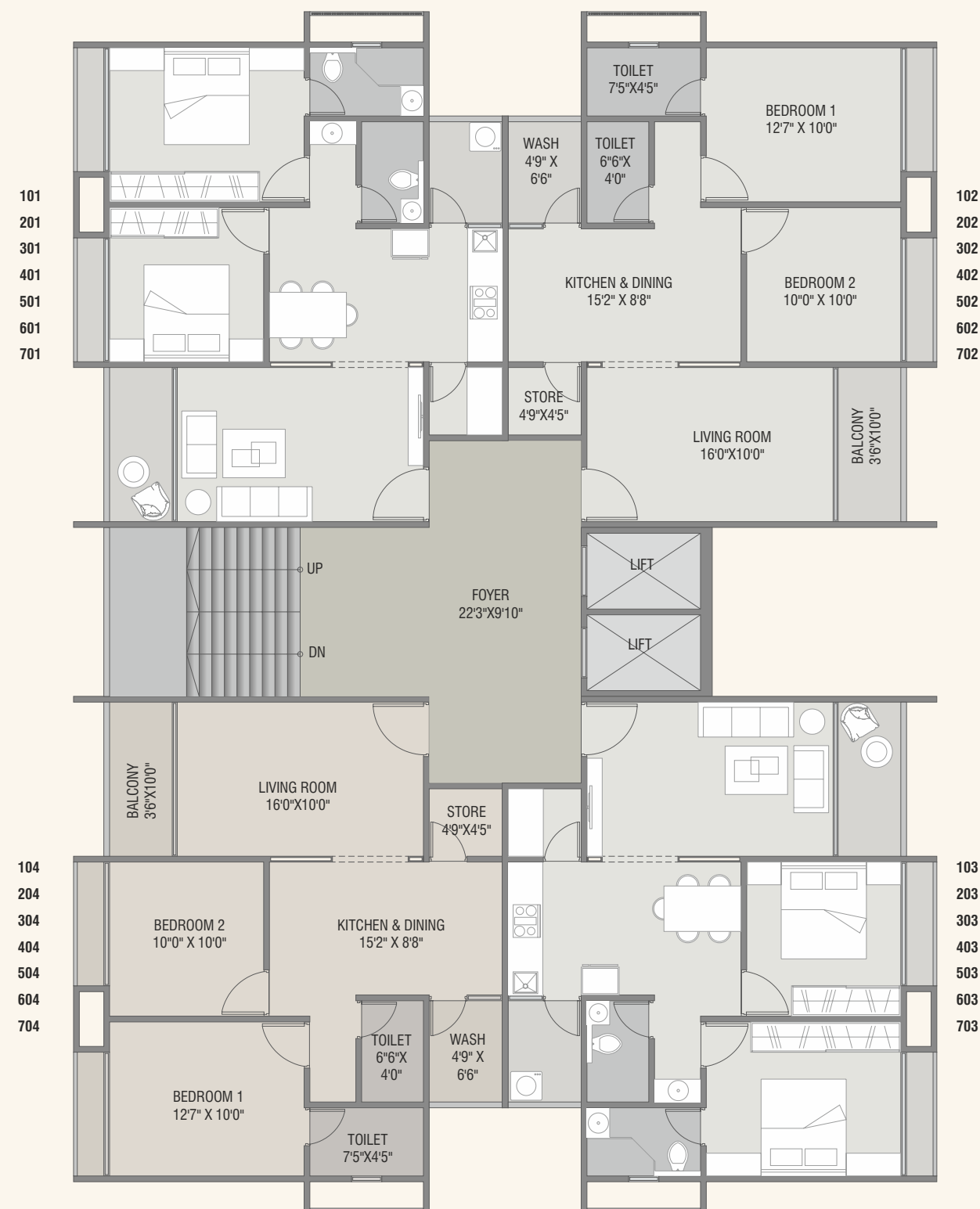


TYPE: C1 & C2
3 BHK

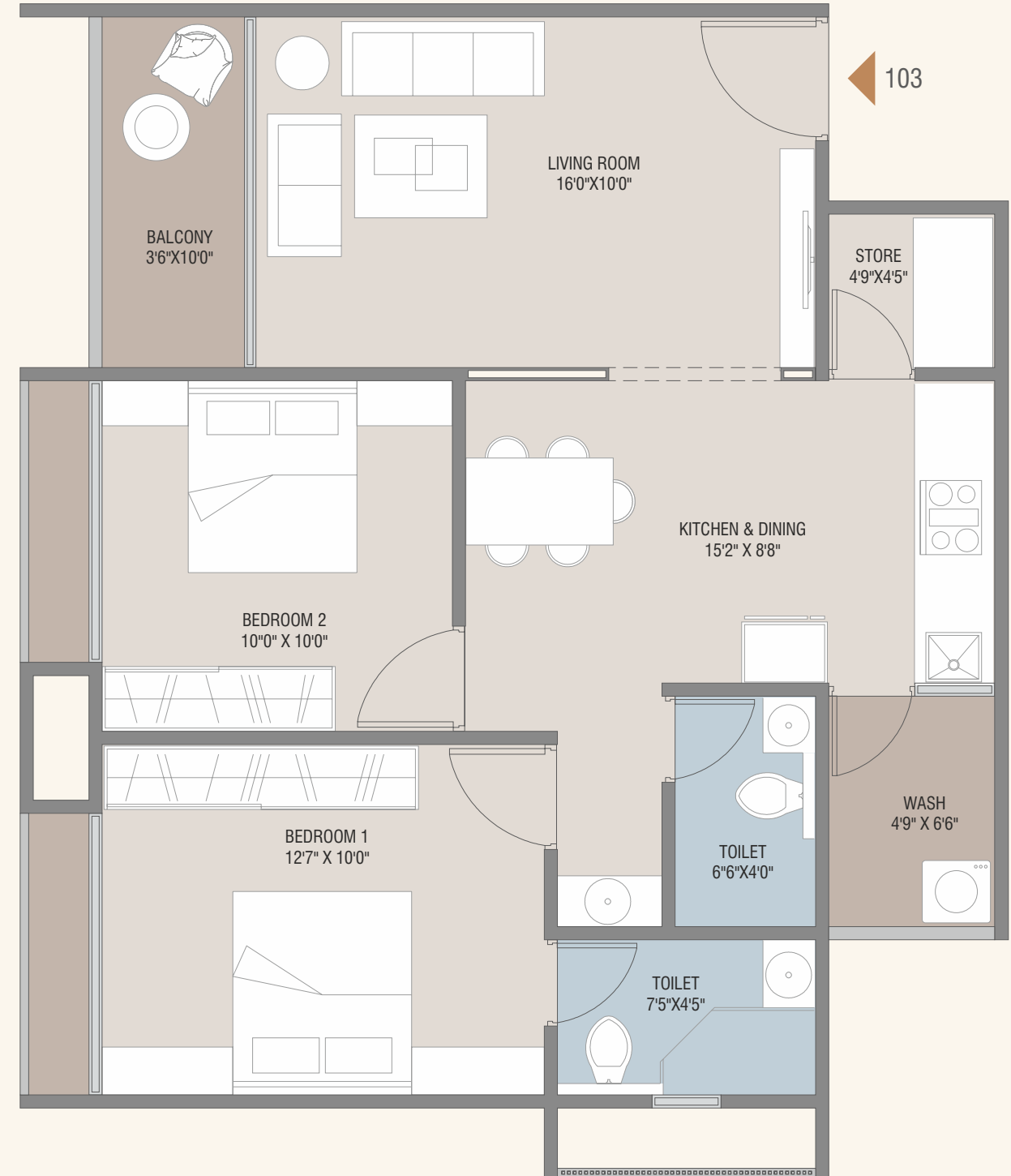
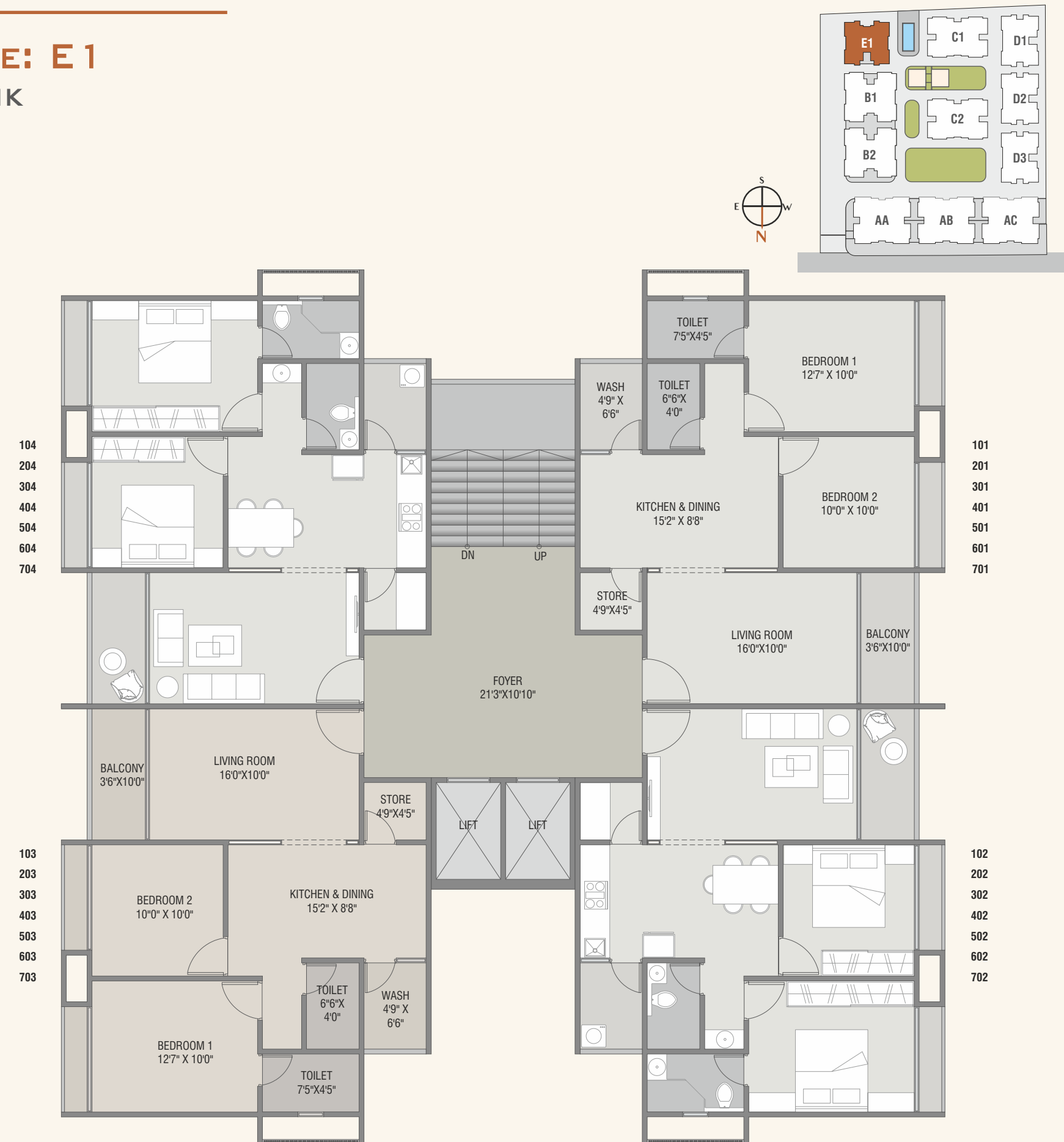


101

TYPE: D1, D2 & D3
2 BHK



TYPE: E 1
2 BHK





TYPE: AA, AB & AC
3 BHK



TYPE: C1 & C2
3 BHK



TYPE: D1 & E1
2 BHK



SALIENT FEATURES

- Single Gated premises with CCTV surveillance
- Comprehensive 24x7 security system for a safe campus
- 24 hours water supply in each apartment
- Sufficient 4-wheeler & 2-wheeler parking on Ground Floor & Basement
- Anti-termite treatment
- Elegant name plate & notice board for each tower
- Tremix concrete internal road with tree plantation & streetlights
- Back-up Generator for common areas, lifts & Borwell



SPECIFICATIONS

STRUCTURE:

- Good quality RCC frame structure as per earthquake safety norms.
- Smooth finish internal plaster
- External surface smooth finished plaster with acrylic texture.

FLOORING:

- 32" x 32" premium quality vitrified tiles flooring

KITCHEN / STORE

- Sandwich Black Granite Platform with SS Sink and designer tiles on dado upto lintel level.
- Ceramic Tiles flooring in wash area.

DOORS:

- Decorative Main Door in wooden frame (Sal Wood) with good quality hardware fittings.
- All other doors are water proof flush door with two side laminates

WINDOWS:

- Anodized aluminum sliding windows with stone sills.

TOILETS:

- Western concept designed toilets. Concealed plumbing the 'Jaquar / Parryware / American Standard' other equivalent make fittings.
- Branded anti-skid ceramic tiles flooring in floor & ceramic tiles on walls upto lintel level.

ELECTRIFICATION:

- Concealed copper wiring (ISI grade)
- Decorative modular switches
- AC point in all bedrooms.
- TV point each in drawing & all bedroom

PAINT:

- Internal two coat putty finish and external 'Asian make exterior paints.

ELEVATORS:

- Premium quality elevator with full glass doors & elegant interior with fully automatic DG Set for power backup.

TERRACE:

- waterproof treatment with tiles flooring on terrace.

WATER SUPPLY:

- Bore wells for 24 hours water supply to overhead water tank with auto control system.



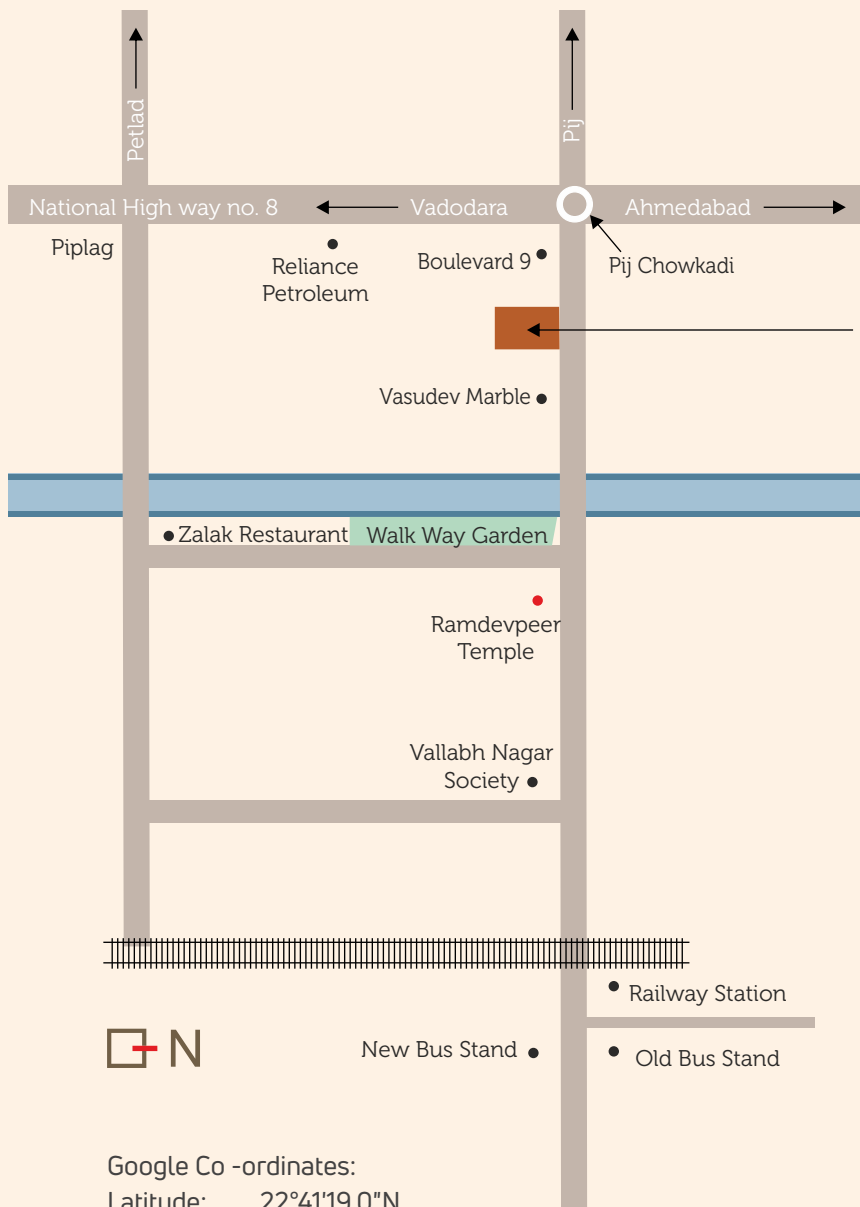
Ready Mix Concrete Plant on Site



24 Hrs Security



CCTV Cameras



Google Co -ordinates:
Latitude: 22°41'19.0"N
Longitude: 72°50'26.9"E

SCAN QR FOR
WEBSITE



SCAN QR FOR
WALK THROUGH



NEXUS-5

SHOPS | 2 & 3 BHK FLATS

Developers:

SAHJANAND DEVELOPERS

Site: Nexus-5, Besides Boulevard 9 Resort, Pij Road, Nadiad, Gujarat 387002

Ph.: **94094 85577** | **98250 19921** | **94263 30449**
74055 55396 | **94094 14444** | **96627 81111**

Website: www.nadiadnexus.com

Architects:
Ar. Karan Patel
99099 65602



Structural Consultant:
AAKAR CONSULTANT

ADDITIONAL CHARGES:

Maintenance Deposit.
Electricity Charges & Meter Deposit MGVL.
Stamp Duty, Registration Fee, GST, Legal Document Charges etc.
Charges for Additional Alterations & Modifications.

Payment Schedule: 25% at the time of Booking & 3% Monthly Installments

Disclaimer: • All plans are subject to amendments and approval by the relevant authorities. • All photography and computer imagery are artist's impression and are provided for illustrative and indicative purposes only. • The dimensions and areas shown are from block to block, without considering any plaster & finish. • The size, shape, and position of doors/windows, columns, design of railings and various other elements are subject to change. • The finishes - flooring, paint colour, door finish/colour, and any other finishes are only indicative and are subject to change. • While every reasonable care has been taken in providing this information, the developers cannot be held responsible for any inaccuracy. • Subject to Nadiad Jurisdiction.

*This brochure is not legal document, this is only for presentation of the project.

RERA Reg. No.:

RERA Website: gujrera.gujarat.gov.in